



August 2018 Water Quality Summary Report

One Sydney Harbour – Remediation Works

Licence Number: 13336

Licensee: Barangaroo Delivery Authority

Licensee Address: Level 21, 201 Kent Street, Sydney

Sampling period: 1 to 31 August 2018

Date provided to Licensee: 20 September 2018

Date published: 20 September 2018

August 2018 Water Quality Summary Report

Barangaroo South – Remediation Works

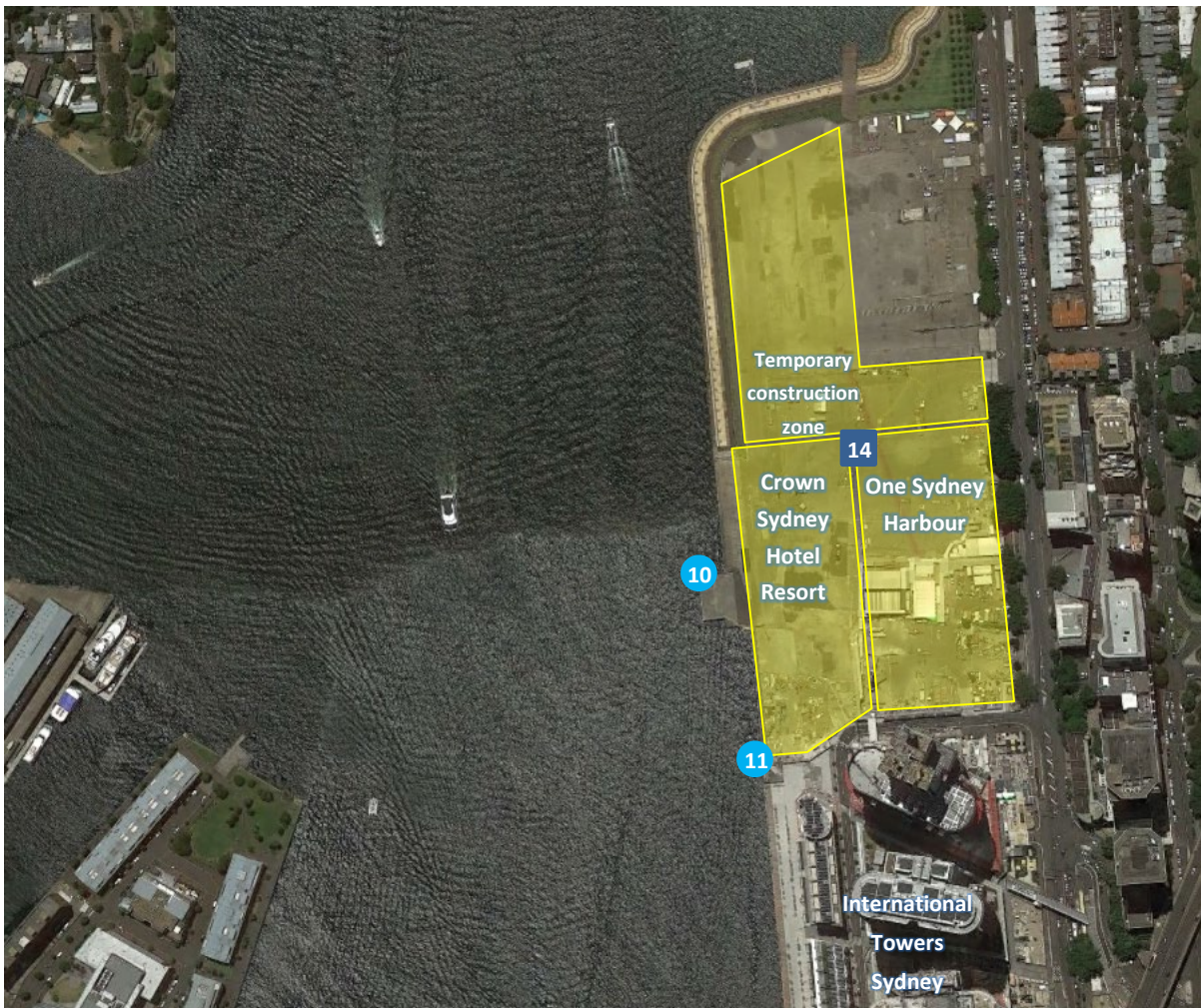
This report has been compiled to summarise results of water quality monitoring at Barangaroo South in August 2018 in accordance with [EPL number 13336](#). This data is for samples taken from 1 to 31 August 2018. The data was provided to the Barangaroo Delivery Authority (the Licencee) on 20 September 2018.

Lendlease conducts water quality monitoring at Barangaroo South to measure water quality and assist the construction team implement appropriate environmental controls on site.

Water quality monitoring is carried out in accordance with all relevant authority and statutory requirements. Ambient monitoring in Darling Harbour measures conductivity, pH, temperature and turbidity.

Water quality monitoring locations

Water quality monitoring locations are located as shown below:



Approximate location of water quality monitoring equipment

Legend

- Ambient Water Quality Monitoring Location
- WTP Water Discharge Point
- X** EPL point number

EPL Point 10 is the Nearfield 1 (NF1) location, and EPL Point 11 is the Nearfield 2 (NF2) location. EPL Point 14 is the discharge point for the Main water treatment plant (MWTP).

Monitoring results

WTP Discharge

During August, the Water Treatment Plant treated and discharged 9187 kL of water to EPL Point 14.

EPL Point 14

Pollutant	Units of measure	Monitoring frequency required by licence	Limit		Min. Value	Max. Value	Median Value	Compliant	No. of Samples:	
			100 th %ile	50 th %ile					Required	Completed
Volume	kL	Daily	2593	-	134	482	300#	Yes	Daily	Daily
Acenaphthene	µg/L	Varies*	2		ND	ND	0.5	Yes	5	6
Acenaphthylene	µg/L	Varies*	2		ND	ND	0.5	Yes	5	6
Ammonia as N	µg/L	Varies*	1700	910	110	360	240	Yes	5	6
Anthracene	µg/L	Varies*	2		ND	ND	0.5	Yes	5	6
Arsenic	mg/L	Varies*	0.0232	0.0023	ND	ND	0.00025	Yes	5	6
Benzene	µg/L	Varies*	500		ND	ND	0.5	Yes	5	6
Benz(a)anthracene	µg/L	Varies*	2		ND	ND	0.5	Yes	5	6
Benzo(a) pyrene	µg/L	Varies*	2		ND	ND	0.25	Yes	5	6
Benzo(b+j)fluoranthene	mg/L	Varies*	2		ND	ND	0.0005	Yes	5	6
Benzo(k)fluoranthene	µg/L	Varies*	2		ND	ND	0.5	Yes	5	6
Benzo(g,h,i)perylene	µg/L	Varies*	2		ND	ND	0.5	Yes	5	6
Cadmium	mg/L	Varies*	0.0007		0.0002	0.0002	0.0001	Yes	5	6
Chromium (Trivalent)	mg/L	Varies*	0.027		ND	ND	0.0005	Yes	5	6
Chromium (hexavalent)	mg/L	Varies*	0.0044		ND	ND	0.0005	Yes	5	6
Chrysene	µg/L	Varies*	2		ND	ND	0.5	Yes	5	6
Copper	mg/L	Varies*	0.0048	0.0013	0.0005	0.0005	0.0005	Yes	5	6
Cyanide (WAD)	mg/L	Varies*	0.014	0.004	0.002	0.013	0.0015	No	5	6
Dibenz(a,h)anthracene	µg/L	Varies*	2		ND	ND	0.5	Yes	5	6
Ethylbenzene	µg/L	Varies*	80		ND	ND	1	Yes	5	6
Fluoranthene	µg/L	Varies*	2		ND	ND	0.5	Yes	5	6
Fluorene	µg/L	Varies*	2		ND	ND	0.5	Yes	5	6
Indeno(1,2,3-c,d)pyrene	µg/L	Varies*	2		ND	ND	0.5	Yes	5	6
Lead	mg/L	Varies*	0.012	0.0044	0.0002	0.0002	0.0001	Yes	5	6
Xylene (m & p)	µg/L	Varies*	75		ND	ND	1	Yes	5	6
Mercury	mg/L	Varies*	0.0001		ND	ND	0.00002	Yes	5	6
Naphthalene	µg/L	Varies*	50		ND	ND	0.5	Yes	5	6
Nickel	mg/L	Varies*	0.074		0.0008	0.0021	0.00065	Yes	5	6
Oil and Grease	mg/L	Varies*	10		ND	ND	2.5	Yes	5	6
Xylene (o)	µg/L	Varies*	350		ND	ND	1	Yes	5	6
pH (Lab)	pH_Units	Varies*	6.5-8.5		6.98	8.1	7.775	Yes	5	6
Phenanthrene	µg/L	Varies*	2		ND	ND	0.5	Yes	5	6
Phenol	µg/L	Varies*	400		ND	ND	0.5	Yes	5	6
Pyrene	µg/L	Varies*	2		ND	ND	0.5	Yes	5	6
Toluene	µg/L	Varies*	180		ND	ND	1	Yes	5	6
TSS	mg/L	Varies*	50		5.2	6	2.5	Yes	5	6
TPH C10-C14	mg/L	Varies*	0.05		ND	ND	0.025	Yes	5	6
TPH C15-C28	mg/L	Varies*	0.1		ND	ND	0.05	Yes	5	6
TPH C29-C36	mg/L	Varies*	0.05		ND	ND	0.025	Yes	5	6
TRH C6 - C9	µg/L	Varies*	20		ND	ND	10	Yes	5	6
Zinc	mg/L	Varies*	0.043	0.015	ND	ND	0.0025	No	5	6
Dissolved Oxygen	mg/L	Varies*			7.5	11	9.5	N/A	5	6
Turbidity	mg/L	Varies*			0.1	0.5	0.15	N/A	5	6
Electrical conductivity	NTU	Varies*			14700	16000	0.25	N/A	5	6
PCBs	uS/cm	Varies*			ND	ND	0.5	N/A	5	6

N/A – no licence limit, monitoring requirement only

ND – not detected

– Mean used in place of Median



There were no exceedances of turbidity criteria for ambient water quality monitoring in Darling Harbour during the month.

Turbidity

Monitoring Parameter	EPL Point 10 (NTU)	EPL Point 11 (NTU)
Minimum	0	0.4
Maximum	18.3	5.5
Mean	1.1	1.0
Limit	63	63

Conductivity

Monitoring Parameter	EPL Point 10 (mS/cm)	EPL Point 11 (mS/cm)
Minimum	53.0	53.2
Maximum	54.4	54.2
Mean	54.0	53.9
Limit	No licence limit, monitoring requirement only	

pH

Monitoring Parameter	EPL Point 10	EPL Point 11
Minimum	7.92	7.86
Maximum	8.12	8.02
Mean	8.03	7.97
Limit	No licence limit, monitoring requirement only	

Temperature

Monitoring Parameter	EPL Point 10 (°C)	EPL Point 11 (°C)
Minimum	13.96	14.11
Maximum	14.89	14.97
Mean	14.41	14.54
Limit	No licence limit, monitoring requirement only	

Frequency

Monitoring Parameter	EPL Point 10 (%)	EPL Point 11 (%)
Monitoring frequency required by licence	Every 15 minutes	
NTU Samples Collected & Analysed	99.8	100
pH Samples Collected & Analysed	99.9	100
Conductivity Samples Collected & Analysed	99.8	100
Temperature Samples Collected & Analysed	99.9	100